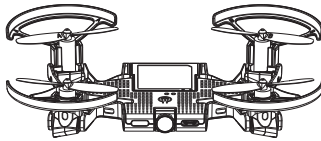


AEE SELFLY

Quick Start Guide

V1.0



Important Safety Information

AEE SELFLY is designed for entertainment and leisure purposes.

- Users must always maintain direct visual contact with AEE SELFLY and monitor its trajectory.
- AEE SELFLY must be used in accordance with the civil aviation regulations of your country.
- Not suitable for children under 14 years old. The small parts have choking hazard. Do not fly close to your face to avoid injuries, especially from your eyes.

- Do not throw anything into the rotating motors. Hands, hair or loose clothes must be kept away from the propellers. Do not touch the rotating propellers.
- Do not change or modify anything of AEE SELFLY.

Caution: Do not start and fly when man, animal or any obstacle is within AEE SELFLY's flight range. (The flight range is up to 15 meters)

Please Read User Manual Before Your First-Time Use

- Precautions before use: please check if AEE SELFLY is assembled according to the instructions.

- Fly only when the area is suitable for the intended use (free zone, no obstacles), and AEE SELFLY is within sight. Flying near high voltage poles, railway tracks, roads, swimming pools or open water is forbidden.

- Only fly in good visibility and fine weather conditions. If sand or dust enters AEE SELFLY, it may cause irreversible damage. If this happens, your AEE SELFLY may not work as intended.

- The user must always maintain direct visual contact with AEE SELFLY and monitor its trajectory.

- Do not use AEE SELFLY at night or in poor lighting conditions.

- All fixed elements in the package must be removed by a capable adult. AEE SELFLY is equipped with 2pcs 500mAh batteries. Please use under the direct supervision of an adult. Do not open or modify Selfly, charger or change any components inside.

- The user must always maintain direct visual contact with AEE SELFLY and monitor its trajectory.

- Do not use AEE SELFLY at night or in poor lighting conditions.

- All fixed elements in the package must be removed by a capable adult. AEE SELFLY is equipped with 2pcs 500mAh batteries. Please use under the direct supervision of an adult. Do not open or modify Selfly, charger or change any components inside.

- The user must always maintain direct visual contact with AEE SELFLY and monitor its trajectory.

- Do not use AEE SELFLY at night or in poor lighting conditions.

- All fixed elements in the package must be removed by a capable adult. AEE SELFLY is equipped with 2pcs 500mAh batteries. Please use under the direct supervision of an adult. Do not open or modify Selfly, charger or change any components inside.

- The user must always maintain direct visual contact with AEE SELFLY and monitor its trajectory.

- Do not use AEE SELFLY at night or in poor lighting conditions.

- All fixed elements in the package must be removed by a capable adult. AEE SELFLY is equipped with 2pcs 500mAh batteries. Please use under the direct supervision of an adult. Do not open or modify Selfly, charger or change any components inside.

- The user must always maintain direct visual contact with AEE SELFLY and monitor its trajectory.

- Do not use AEE SELFLY at night or in poor lighting conditions.

- All fixed elements in the package must be removed by a capable adult. AEE SELFLY is equipped with 2pcs 500mAh batteries. Please use under the direct supervision of an adult. Do not open or modify Selfly, charger or change any components inside.

- The user must always maintain direct visual contact with AEE SELFLY and monitor its trajectory.

- Do not use AEE SELFLY at night or in poor lighting conditions.

- All fixed elements in the package must be removed by a capable adult. AEE SELFLY is equipped with 2pcs 500mAh batteries. Please use under the direct supervision of an adult. Do not open or modify Selfly, charger or change any components inside.

- The user must always maintain direct visual contact with AEE SELFLY and monitor its trajectory.

- Do not use AEE SELFLY at night or in poor lighting conditions.

- All fixed elements in the package must be removed by a capable adult. AEE SELFLY is equipped with 2pcs 500mAh batteries. Please use under the direct supervision of an adult. Do not open or modify Selfly, charger or change any components inside.

- The user must always maintain direct visual contact with AEE SELFLY and monitor its trajectory.

- Do not use AEE SELFLY at night or in poor lighting conditions.

- All fixed elements in the package must be removed by a capable adult. AEE SELFLY is equipped with 2pcs 500mAh batteries. Please use under the direct supervision of an adult. Do not open or modify Selfly, charger or change any components inside.

- The user must always maintain direct visual contact with AEE SELFLY and monitor its trajectory.

- Do not use AEE SELFLY at night or in poor lighting conditions.

- All fixed elements in the package must be removed by a capable adult. AEE SELFLY is equipped with 2pcs 500mAh batteries. Please use under the direct supervision of an adult. Do not open or modify Selfly, charger or change any components inside.

- The user must always maintain direct visual contact with AEE SELFLY and monitor its trajectory.

- Do not use AEE SELFLY at night or in poor lighting conditions.

- All fixed elements in the package must be removed by a capable adult. AEE SELFLY is equipped with 2pcs 500mAh batteries. Please use under the direct supervision of an adult. Do not open or modify Selfly, charger or change any components inside.

- The user must always maintain direct visual contact with AEE SELFLY and monitor its trajectory.

- Do not use AEE SELFLY at night or in poor lighting conditions.

- All fixed elements in the package must be removed by a capable adult. AEE SELFLY is equipped with 2pcs 500mAh batteries. Please use under the direct supervision of an adult. Do not open or modify Selfly, charger or change any components inside.

- The user must always maintain direct visual contact with AEE SELFLY and monitor its trajectory.

- Do not use AEE SELFLY at night or in poor lighting conditions.

- All fixed elements in the package must be removed by a capable adult. AEE SELFLY is equipped with 2pcs 500mAh batteries. Please use under the direct supervision of an adult. Do not open or modify Selfly, charger or change any components inside.

- The user must always maintain direct visual contact with AEE SELFLY and monitor its trajectory.

- Do not use AEE SELFLY at night or in poor lighting conditions.

- All fixed elements in the package must be removed by a capable adult. AEE SELFLY is equipped with 2pcs 500mAh batteries. Please use under the direct supervision of an adult. Do not open or modify Selfly, charger or change any components inside.

Privacy

Recording and using images and voices of others without consent will constitute an infringement on their image and privacy rights and shall be subject to legal liability. Ask for consent before recording and sharing their voices and images on Internet. Do not share any degrading image or sound which could undermine individual reputation and dignity.

The use of AEE SELFLY for surveillance or espionage is strictly prohibited and could result in your prosecution by the law.

Recommended Flying Conditions

Outdoors

- Do not fly outdoors in bad weather such as wind, rain, or snow (outdoor wireless flight)

- Do not fly in crowds or in densely populated areas to avoid accidents.

- It is recommended to manoeuvre AEE SELFLY within the distance of sight, away from obstacles and lakes, and to avoid accidental damage to AEE SELFLY.

Indoors

- Indoor flight uses a visual positioning system (also called optical flow positioning), which requires the area beneath the optical flow camera to have a certain pattern and is not monotonic, not too sparse or too dense.

- Indoor flight should be carried out in a well-lit environment, such as under normal indoor fluorescent lighting.

- The optimal height for visual positioning is 1.5m~2m, should not be lower than 0.5m during flight, otherwise it may not be accurately positioned.

Preflight Check

Before you start flying, please check the following items:

1. Battery- Fully charged and properly inserted.

2. Motors- Fully unfolded and vertical 90°.

3. Propellers- Fully fastened and no loose or damage.

4. Optical Flow Camera and Front Camera- Fully clean

5. Drone- Placed on a flat surface.

Packaging Kit

Drone X1 (including props and prop guards)

Prop guard (set) X2

Spare props (set) X2

Battery X2

Docking Case X1

USB Cable X1

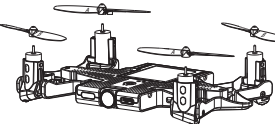
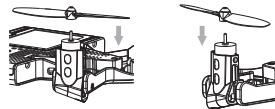
Docs

*Prop guard structure please refer to the actual ones.

Assembly Precautions

1. Assemble Propellers

Please press down firmly during assembly to ensure that the bottom of the propeller cap is inserted.



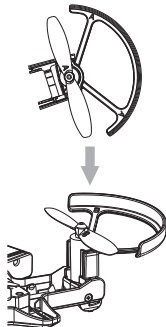
The Rear

Fix Propeller A and B on the corresponding motors as shown above.

Assembly Precautions

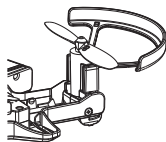
2. Assemble Propeller Guards

Press the mounting position of prop guards inward and you will hear the sound "CA". Make sure that prop guards securely catch motors.



3. Remove Propeller Guards

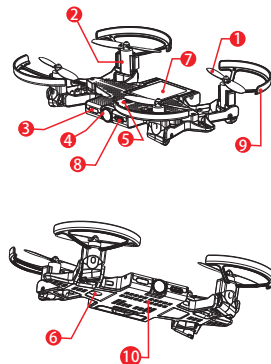
Please hold the prop guard by hand while lifting the prop guard mounting position outward, and then remove the prop guard.



Please be careful when removing prop guards. Do not use violence, otherwise it may damage AEE SELFLY's arm or cut your finger.

1. Brief Introduction

AEE SELFLY is equipped with a visual positioning system and integrated flight control system to stabilize hovering and flying. High-definition images can be displayed on mobile devices via AEE SELFLY App. Photo, video, one-touch take-off/landing and other functions can be realized via AEE SELFLY App as well. AEE SELFLY camera captures 3.69 megapixel photos and 720p HD video. The maximum flight time is approximately 4 minutes*.



1. Propellers (Propeller A Propeller B)

2. Motors

3. Status Indicator Light

4. Camera

5. Power Button

6. Optical Flow Sensor

7. Battery

8. Type-C USB

9. Propeller Guard

10. Wi-Fi Indicator Light

*The maximum flight time is measured when AEE SELFLY is hovering in a windless environment.

2. Download AEE SELFLY App

The AEE SELFLY APP is available for free download in APP Store and Google Play

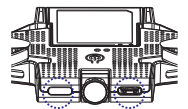


AEE SELFLY App supports iOS 9.0 or above Android 5.0 or above

3. Charging



(Insert battery in the direction as above pic shows) Use the standard Type-C USB cable to connect the Type-C USB port with your own USB charger to charge AEE SELFLY. Charging time is about 50 mins



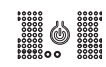
Status Indicator Light

• • • Red light on means AEE SELFLY is in charging

— Red light off means AEE SELFLY is fully charged

- Please use a FCC/CE compliant USB charger. The charger output should be DC 5V / 1.0A or above.
- Please connect the charger when the power is off because it won't charge when the power is on.

4. Flight Preparation



Turn on/off AEE SELFLY
Turn on: After insert the battery, press power button for 2s. The blue light is on—flashes quickly, and then AEE SELFLY is turned on.

Connect Mobile to AEE SELFLY:
When AEE SELFLY is turned on, select WLAN starting with Selfly on your mobile and enter the initial password 00000000 for WiFi connection.

When the blue light is on and AEE SELFLY App shows preview image, which indicates that the connection is successful.

5. Flight

AEE SELFLY App Interface

• Take-off / Landing



One-touch Take-off

One-touch Landing

• Photo/Video



Photo and Video

• Use the virtual joystick to control flight (the default control method is American hand)

Left Joystick

Up

Down

Rotate Left

Rotate Right

Right Joystick

Front

Back

Left

Right

APP Icons

Back

Wi-Fi Signal

Battery

Joystick Mode

Fly by Pod

Album

Headless Mode

Face Tracking Mode

Settings

Fly by Picture

Specs

AEE AEE SELFLY Selfie Drone (Model TLW004)

Weight (including propeller guards) 68g

Max Flight Speed 3m/s

Max Flight Time 4mins (windless)

Working Temp 5°C ~ 45°C

Working Frequency 2.4~2.4835 GHz

EIRP <20 dBm (FCC)

<20 dBm (CE)

<20 dBm (SRRC)

Camera

Image 2560 × 1440

Video HD: 1280 × 720 20p

Video format MP4

Battery

Capacity 500 mAh

Voltage 3.8 V

Battery Type LiPo

Power 1.9 Wh

Battery Weight 14 ± 2g

Charging Environment Temp 5°C ~ 45°C

Max Charging Power 10 W

For product details, please visit the User Manual at the following URL.

www.aeeusa.com

※User manual is subject to change without further notice.

AEE SELFLY is a trademark of AEE.

Copyright © 2018 AEE

